

DOOR SCHEDULE

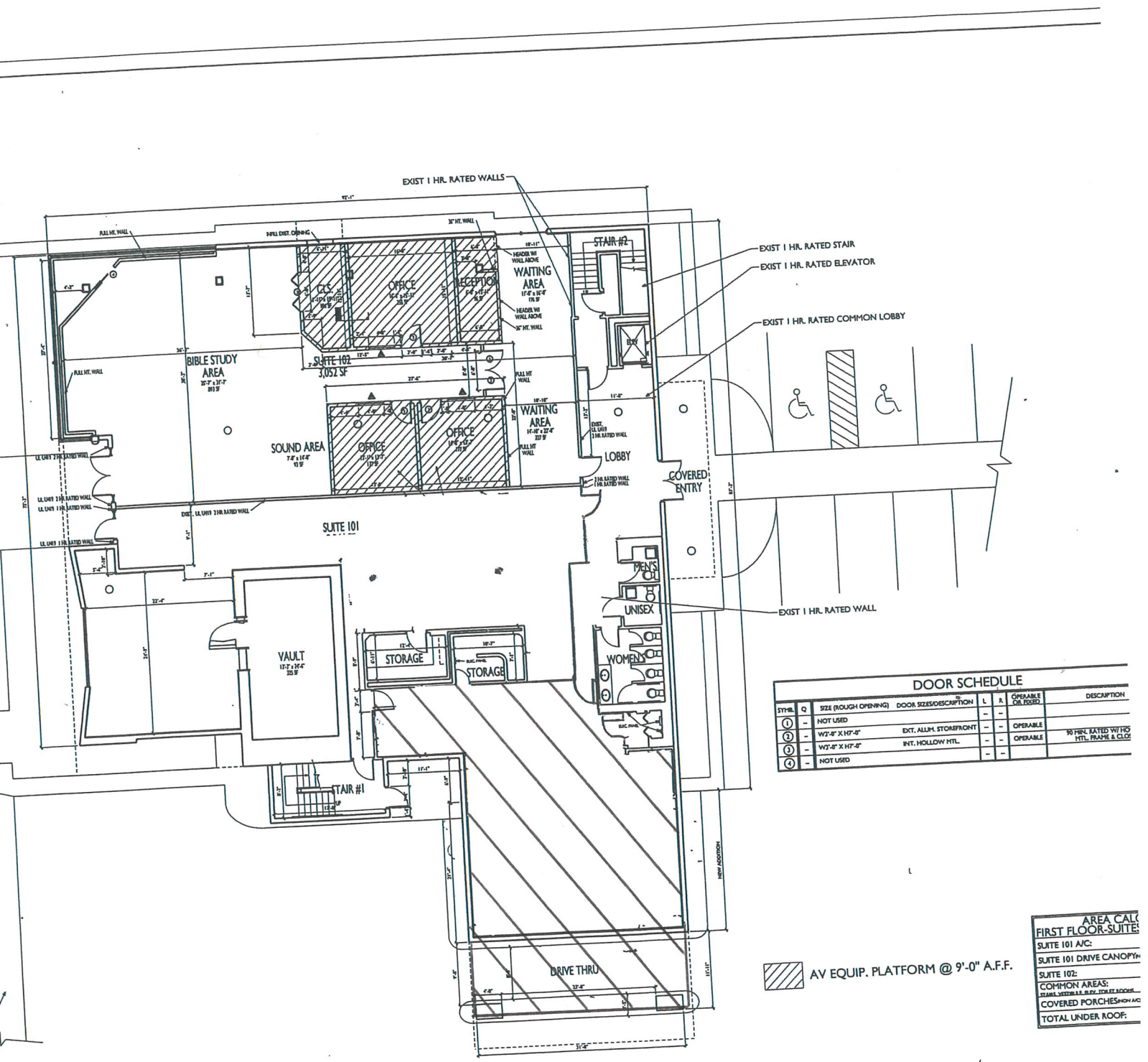
TYPE	Q	SIZE (ROUGH OPENING)	DOOR SIZE/DESCRIPTION	L	R	OPERABLE OR FIXED	DESCRIPTION
①	-	NOT USED		-	-	OPERABLE	
②	-	W7'-4" X H7'-4"	EXT. ALUM. STOREFRONT	-	-	OPERABLE	90 FIN. LATED W/ FIB HTL FRAME & CLSD
③	-	W7'-4" X H7'-4"	INT. HOLLOW HTL	-	-	OPERABLE	
④	-	NOT USED		-	-		

AREA CALC
FIRST FLOOR-SUITE
 SUITE 101 A/C:
 SUITE 101 DRIVE CANOPY:
 SUITE 102:
COMMON AREAS:
 STAIRS, RESTROOMS, ELEVATOR, LOBBY
 COVERED PORCHES/SHOWING
TOTAL UNDER ROOF:

AV EQUIP. PLATFORM @ 9'-0" A.F.F.

A
A2 **PROPOSED FLOOR PLAN**
 W/ INFORMATION SCALE: 1/8" = 1'-0"

GENERAL NOTES:
 ALL GENERAL & SUB-CONTRACTORS TO FIELD VERIFY ALL DIMENSIONS.
 ALL ELECTRICAL, WATER, SEWER AND GAS SERVICE LOCATIONS.
 ALL WORK SHALL COMPLY WITH THE 2010 EDITION (EXCEPTING TO)
 OF THE FLORIDA BUILDING CODE SECT. 1609.100 WIND LOAD
 AND THE FLORIDA ACCESSIBILITY CODE FOR BUILDING CONSTRUCTION.
 ALL DOOR & WINDOW OPENINGS TO MEET OR EXCEED DESIGN PRESSURE
 AS SPECIFIED ON SHEET T16.
 THE BUILDING WIND CATEGORY IS "B".
 INTERNAL PRESSURE COEFFICIENT IS ".18" IN ACCORDANCE WITH ASCE 7.
 ALL GLAZING IS TO BE IMPACT RESISTANT OR USE PROTECTIVE HURGLU



DOOR SCHEDULE

SYMBOL	Q	SIZE (ROUGH OPENING)	DOOR SIZE/DESCRIPTION	L	R	OPERABLE OR FIXED	DESCRIPTION
①	-	NOT USED				OPERABLE	
②	-	W2'-4" X H7'-0"	EXT. ALUM. STOREFRONT			OPERABLE	W/ FIBER RATED W/ HD HTL. FRAME & GLOS
③	-	W2'-4" X H7'-0"	INT. HOLLOW HTL.			OPERABLE	
④	-	NOT USED					

AREA CALC

FIRST FLOOR-SUITE:

SUITE 101 A/C:

SUITE 101 DRIVE CANOPY:

SUITE 102:

COMMON AREAS:

SEMI-VISIBLE BLVD. STORE FRONT

COVERED PORCHES (SHOW A/C)

TOTAL UNDER ROOF:

AV EQUIP. PLATFORM @ 9'-0" A.F.F.

GENERAL NOTES:

ALL GENERAL & SUB-CONTRACTORS TO FIELD VERIFY ALL DIMENSIONS, ELECTRICAL, WATER, SEWER AND GAS SERVICE LOCATIONS.

ALL WORK MUST COMPLY WITH THE 2010 EDITION (EXPOSURE "D") OF THE FLORIDA BUILDING CODE SECT. 1609.1.6 HPM WIND LOAD AND THE FLORIDA ACCESSIBILITY CODE FOR BUILDING CONSTRUCTION.

ALL DOOR & WINDOW OPENINGS TO MEET OR EXCEED DESIGN PRESS. AS SPECIFIED ON SHEET TR.

THE BUILDING FIRE CATEGORY IS "I" IN ACCORDANCE WITH ASCE 7 INTERNAL PRESSURE COEFFICIENT IS .18 IN ACCORDANCE WITH ASCE 7 ALL GLAZING IS TO BE IMPACT RESISTANT OR USE PROTECTIVE HURRIC.

PROPOSED FLOOR PLAN

SCALE: 1/8" = 1'-0"

A
A2 W/ INFORMATION