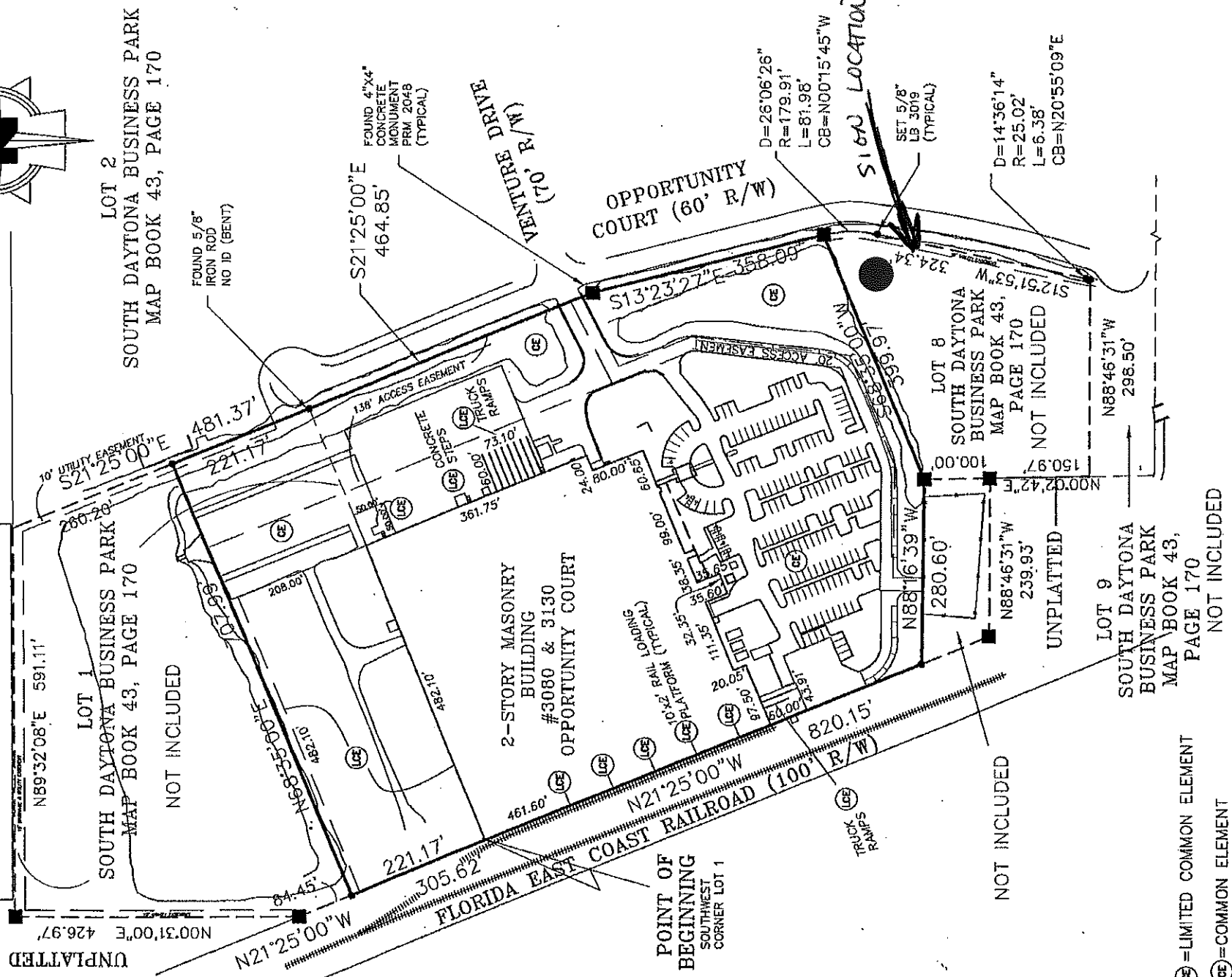


UNPLATTED

UNPLATTED

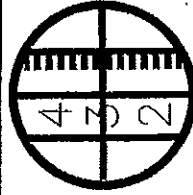


(L) = LIMITED COMMON ELEMENT

(C) = COMMON ELEMENT

**EXHIBIT 1**

**INDUSTRIAL OPPORTUNITY CONDOMINIUM**



**SLIGER & ASSOCIATES, INC.**

PROFESSIONAL LAND SURVEYORS

LICENSED BUSINESS CERTIFICATION NO. 3019

3921 SOUTH NOVA ROAD

PORT ORANGE, FL 32127

(386) 761-5385

www.sligerassociates.com

Copyright © 2003 Sliger & Associates, Inc.

**SURVEY, PLOT  
PLAN &  
GRAPHIC  
DESCRIPTION  
OF  
IMPROVEMENTS**